

How to remove your battery

To remove and reinstall your battery pack you will need the **4mm hex key** and **connector tools** that came with your standard range battery. New screws and wing plates are optional.

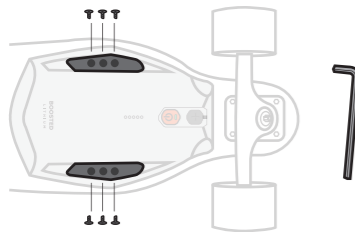
WARNING: Please use caution when handling and replacing your battery pack. Loose metal objects should be kept away from the battery pack mating connector while the battery pack is being replaced. The battery pack should be replaced in dry environments. Avoid dust, dirt, debris and moisture from coming into contact with the battery terminals while replacing your battery pack.

Step 1

Make sure your battery is powered off. Place the board on the grip tape side with the wheels up.

Step 2

Using the **4mm hex key**, remove the 6 battery pack screws and 2 wing plates. Place them aside.



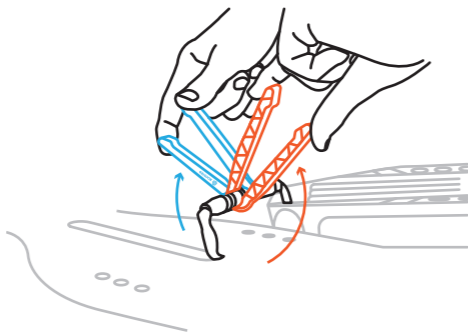
1

Step 3

Lift the battery pack off the board. If present, unclip the battery pack connector from around the metal wire connectors. Let it hang to the side.

Step 4

Place the two plastic **connector tools** on either side of the metal connectors, making sure to fit the metal connector snugly into the curve of the tools. The ridge on the inside of the tools should sit along the outside of the metal rings, and the flat sides of the tools with the Boosted logos should be facing each other.



should be facing each other.

WARNING: Do not use pliers to tighten or loosen the connectors as they will easily damage the threaded metal rings.

2

Step 5

Now, squeeze the handles together and rotate the tools in opposite directions, until the metal wire connector comes loose. Remove the tools and use your fingers to undo the metal connectors until separated.

Step 6

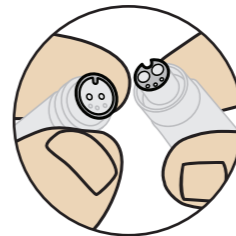
Under good lighting, check both sides of the battery connectors to make sure there is no dust, debris, discoloration, wear, abrasion, or damage. If there is evidence of damage or deterioration, please call or contact us.

How to install your new standard range battery pack

Step 1

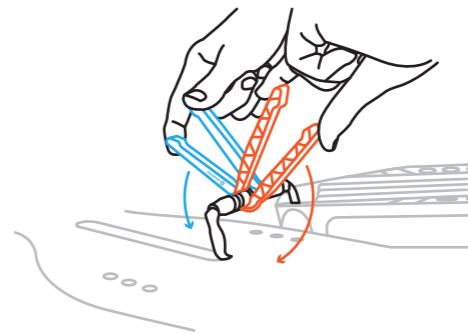
To connect your new battery pack you will need to screw together the two metal wire connectors - one from the battery pack, the other from the board. Take care to line up the leads correctly using the notch in the connector as a guide. Reconnect the two connector ends, making sure to push the two sides together securely. Next, hand tighten the metal connectors as securely as possible.

3



Step 2

Place the two plastic **connector tools** on either side of the metal connectors, making sure to fit the metal connector snugly into the curve of the tools. The ridge on the inside of the tools should sit along the outside of the metal rings, and the flat sides of the tools with the Boosted logos should be facing each other. Now, squeeze the handles together and rotate the tools in opposite directions, tightening until the connector is very snug. This could take a few rotations.



4



If you have any questions, feel free to email us at service@boostedboards.com, give us a call at (650) 933-5151, or visit us at support.boostedboards.com

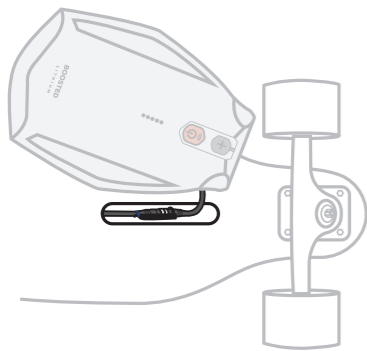
Our service team is available
Monday-Friday 9:00am - 5:00pm PDT.
Saturday-Sunday 8:00am - 3:00pm PDT.

Pour une version française de ce mode d'emploi, veuillez visiter :
Para obtener una versión de este manual en español, visite:
Eine deutsche Ausführung dieser Anleitung findest Du unter:

www.boostedboards.com/manual

Step 3

If present, reattach the battery connector clip. Place the battery pack back onto the board. Be sure to tuck the wire into the deck channel. Make sure the wire sits next to, not on top of, the accessory wire inside the channel.



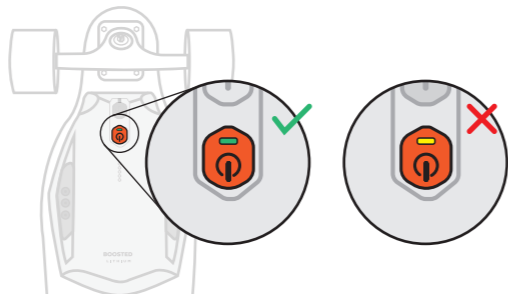
Step 4

Reset the 2 wing plates and 6 battery pack screws using the **4mm hex key**. Check that the battery sits flat against the deck before tightening all the screws to ensure that the pack is not pinching any wires underneath it.

To reattach, start by tightening the middle screws on either side before tightening the remaining 4 screws. Go back over all 6 screws, re-tightening each firmly to ensure the screws are flush with the wing plates.

Step 5

Power the board back on. If the battery pack is properly connected, the power button will show a GREEN LED indicator. If the battery pack is not properly connected, the power button will show a YELLOW LED indicator. If you need to update the board's software, the power button will show a flashing WHITE LED indicator.



Boosted contributes to recycling and disposal costs where applicable. Waste electrical products should not be disposed of with household waste. Please recycle where facilities exist. Check with your Local Authority for recycling advice.



Please refer to the instructions included with your board for:

- Battery safety and handling information
- Product operation instructions and warnings

Copies of the above are also available online here: www.boostedboards.com/manual

Standard Range Battery Pack

USER GUIDE

Included with the standard range battery pack:

- Set of connector tools (1)
- Battery screws (6)
- Battery wing plates (2)
- 4mm hex key (1)
- Printed instructions (1)
- Stickers (2)

Follow along with the tutorial videos here: boostedboards.com/extended-range-videos